



# FOOD TRUCK BUSINESS LICENSE PACKET

- Business License Application Instructions and expectations
- Application
- Floor Plan Diagram
- Air Quality Management Check list
- Resources for starting a New Business



# STARTING A BUSINESS IN THE CITY OF CALIMESA

## PART 1

All businesses that are either located within The City of Calimesa and/or conducting business within the City are required to purchase a business license. The initial license is valid for six (6) months from approval, after which the business license can be renewed on an annual basis with the applicable fees

### What type of License do you need?

1

**OUT OF TOWN** Licenses are required for all businesses located outside of Calimesa that conduct business within City limits.

Examples of Out of Town businesses but not limited to

Business License	\$48.00 annual
Casp state fee	\$4.00 annual

Virtual Office

Contractor

Mobile Vendor

2

**Home Occupation** Licenses are required for all businesses operating at a residential home located in The City of Calimesa.

Examples of a Home Occupation businesses but not limited to

Business License	\$24.00 annual
Casp state fee	\$4.00 annual
Home Occupation	\$171.00 one-time fee

Home Office

Contract Work

Online Sales

3

**Certificate of Occupancy** Licenses are required for all businesses that conduct business within areas zoned commercial use.

Examples of a Certificate of Occupancy businesses but not limited to

Business License	\$24.00
Casp state fee	\$4.00 annual
Planning Review	\$80.00 one-time fee
Code Enforcement	\$80.00 one-time fee
Building & Safety	\$77.00 one-time fee
Fire Inspection	\$77.00 annual

Restaurants

Store Front

Office Space

Food Truck



## PART 2

# What to expect after you submit your application

### Home Occupations

Business license applications are routed to the following departments for approval. (*You may be contacted for further information if needed*).

1. Planning Department
2. Code Enforcement Department
3. Building Department
4. Fire Department

- Fees will be collected after your Business License has been approved.
- Business Licenses will be mailed within 7 to 14 business days after fees have been collected

### Out of Town Businesses

- Business license applications are processed after all fees have been paid.
- Business Licenses will be issued within 7 to 14 business days.

### Certificate of Occupancy

- Business license applications are routed to the following departments for approval. (*You may be contacted further information if needed*).
- 1.Planning Department
  - 2.Code Enforcement Department
  - 3.Building Department
  - 4.Fire Department
- Fees will be collected after your Business License has been approved.
  - Business Licenses will be mailed within 7 to 14 business days after fees have been collected

### **CITY OF CALIMESA**

908 Park Ave.  
Calimesa, CA 92320

PHONE# (909) 795-9801  
FAX# (909) 795-4399



## CITY OF CALIMESA

908 Park Ave.  
Calimesa, CA 92320

PHONE# (909) 795-9801  
FAX# (909) 795-4399

### FEES

\$24.00	Business License (annual fee)
\$4.00	State Fee (annual fee)
\$80.00	Plan Review (1x fee)
\$80.00	Code Enforcement (1x fee)
\$70.00	Building Inspection (1x fee)
\$70.00	Fire Inspection (annual fee)

### PLEASE NOTE:

An initial business license is valid for six (6) months from approval, after which the business license may be renewed on an annual basis. For the Business License Fee and the annual Fire Inspection Fee (if applicable). It is the responsibility of the business owner to renew or cancel their business license prior to its expiration in order to avoid an administrative citation.

### OFFICE USE ONLY

BL #

Date Paid

Receipt No.

Amount Paid

\$

# BUSINESS LICENSE APPLICATION

## Certificate of Occupancy for Food Truck: Part 1

1

**Please type or print legibly: INCOMPLETE APPLICATIONS WILL BE RETURNED**

Business Name (As it is to appear on the Business License) \_\_\_\_\_ Phone # \_\_\_\_\_  
 \_\_\_\_\_ Fax # \_\_\_\_\_  
 \_\_\_\_\_ E-mail \_\_\_\_\_  
 \_\_\_\_\_ Emergency Phone #. \_\_\_\_\_  
Mailing Address: \_\_\_\_\_ Business Location Address: \_\_\_\_\_  
 \_\_\_\_\_  
 \_\_\_\_\_

2

TYPE OF BUSINESS: \_\_\_\_\_  
BUSINESS DESCRIPTION (Please provide a detailed description of proposed business activities)  
 \_\_\_\_\_  
 \_\_\_\_\_  
 \_\_\_\_\_  
# of Full-Time Employees \_\_\_\_\_ # Employees working at one time \_\_\_\_\_  
# of Part-Time Employees \_\_\_\_\_ Hours of operation: \_\_\_\_\_ to \_\_\_\_\_ days

3

### BUSINESS OWNER INFORMATION

Name \_\_\_\_\_ Date of Birth \_\_\_\_\_  
Social Security# \_\_\_\_\_ Driver's License # \_\_\_\_\_  
Contractor License #. \_\_\_\_\_ Class:  A  B  C  
Seller's Permit #. \_\_\_\_\_ Federal EIN #. \_\_\_\_\_  
 N/A I do not have a seller's resale permit State EIN #. \_\_\_\_\_  
State Agency:  CA  Other \_\_\_\_\_  
Health Permit #. \_\_\_\_\_  
 N/A I do not have a health permit

### SIC CODE

SIC code: Standard Industrial Classification

To acquire your SIC Code: <https://sic-code.com>.

Required by the State of California Regional Water Quality Board - Santa Ana Region Order NO. 128-20100033, NPDES

No. CA 618033

4

### WORKER'S COMPENSATION INFORMATION

I have Worker's Compensation coverage  I do not have Worker's Compensation coverage   
 I do not need Worker's Compensation coverage (SELF EMPLOYED WITH NO EMPLOYEES)   
 Worker's Compensation Insurance Company Name \_\_\_\_\_

5

SIGNATURE \_\_\_\_\_ TITLE \_\_\_\_\_



**CITY OF CALIMESA**  
908 Park Ave.  
Calimesa, CA 92320

Welcome to the City of Calimesa and our business community. We wish you every success in your business venture and encourage you to take advantage of any assistance we may be able to provide. If we can be of any assistance please do not hesitate to contact us. Calimesa's City Hall office hours are 7:00 am to 5:30pm Monday through Thursday.

# BUSINESS LICENSE APPLICATION

## Certificate of Occupancy for Food Truck: Part 2

6

### RECYCLING INFORMATION

Does your business recycle:  YES  NO Will

Please describe the type of material your business recycles \_\_\_\_\_

7

Did you complete the SCAQMD Air Quality Permit Checklist?  YES  NO

Have you obtained a fictitious business name?  YES  NO  N/A does not apply to my business

8

Will there be storage of combustible material?  YES  NO

*If yes, please show on the required diagram the location of the outside storage.*

Will the business be involved in handling of hazardous material?  YES  NO

*If yes, please provide a sperate list of said hazardous materials and attach with application.*

Will there be any outside storage of materials or items for sale?  YES  NO

*If yes, please show on the required diagram, the location of the outside storage*

Does your business sell tobacco or tobacco paraphernalia:  YES  NO

Does your business plan to sell alcohol?:  YES  NO

Will the business involve the handling or preparation of food? :  YES  NO

Does the business have use of a dumpster or trash container:  YES  NO

*If yes, please show the location on the required diagram*

9

### PROPERTY OWNER INFORMATION

PROPERTY OWNER NAME: \_\_\_\_\_

MAILING ADDRESS: \_\_\_\_\_

PHONE NUMBER: \_\_\_\_\_

10

"I declare under the penalties of perjury that this application has been examined by me and to the best of my knowledge and belief, is a true, correct, and complete statement of facts. Furthermore, I agree to allow employees of the City of Calimesa or any agent thereof to conduct random inspections on the business for compliance with zoning, code enforcement or building code issues during nay listed hour of operation without notice or cause. Furthermore, we warrant to not use or occupy this building(s) until all City regulations and conditions concerning this building (s) have been complied with and a Certificate of Occupancy as been issued and it is understood and agreed that the City of Calimesa through its employees or agents, is hereby authorized to order immediate discontinuance of any and all utilities for any violation of City ordinance or regulations and conditions prior to final approval of use and issuance of tis Certificate of Occupancy.

Signature

Title

Date

[1] Senate Bill 1186, Section 4469: Under federal and state law, compliance with disability access laws is a serious and significant responsibility that applies to all California building owners and tenants with Buildings ope to the public. You may obtain information about your legal obligations and how to comply with disability access laws at the following agencies: 1) The Diviison of the State Architect at [www.dgs.ca.gov/dsa/Home.aspx](http://www.dgs.ca.gov/dsa/Home.aspx), 2) The Department of Rehabilitation at [www.rehab.cahwnet.ove](http://www.rehab.cahwnet.ove), and 3) The California Commission on Disability Access at [www.ccea.ca.gov](http://www.ccea.ca.gov)



# BUSINESS LICENSE APPLICATION

## Certificate of Occupancy for Food Truck: Part 3

### THIS SECTION IS FOR CITY USE ONLY

Zone Designation: \_\_\_\_\_

The Intended use meets zoning  Yes  NO

Requires:  CUP  DPR  MDPR  Other \_\_\_\_\_

Permitted Business Activities \_\_\_\_\_

Planning Dept. Approval/Denial \_\_\_\_\_

Code Enforcement Approval/Denial \_\_\_\_\_

Fire Dept. Approval/Denial \_\_\_\_\_

Building Dept. Approval/Denial \_\_\_\_\_

Occupancy Inspection Date \_\_\_\_\_ Pass \_\_\_\_\_ Failed \_\_\_\_\_

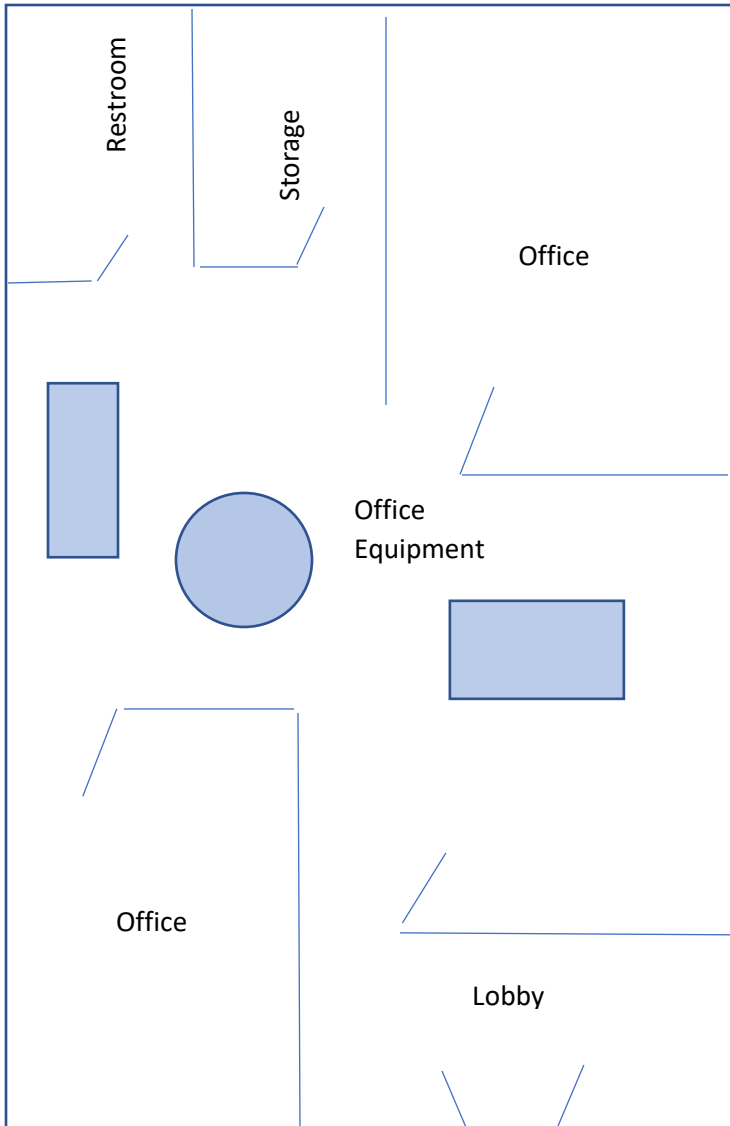
Notes: \_\_\_\_\_  
\_\_\_\_\_  
\_\_\_\_\_  
\_\_\_\_\_  
\_\_\_\_\_

Signature \_\_\_\_\_

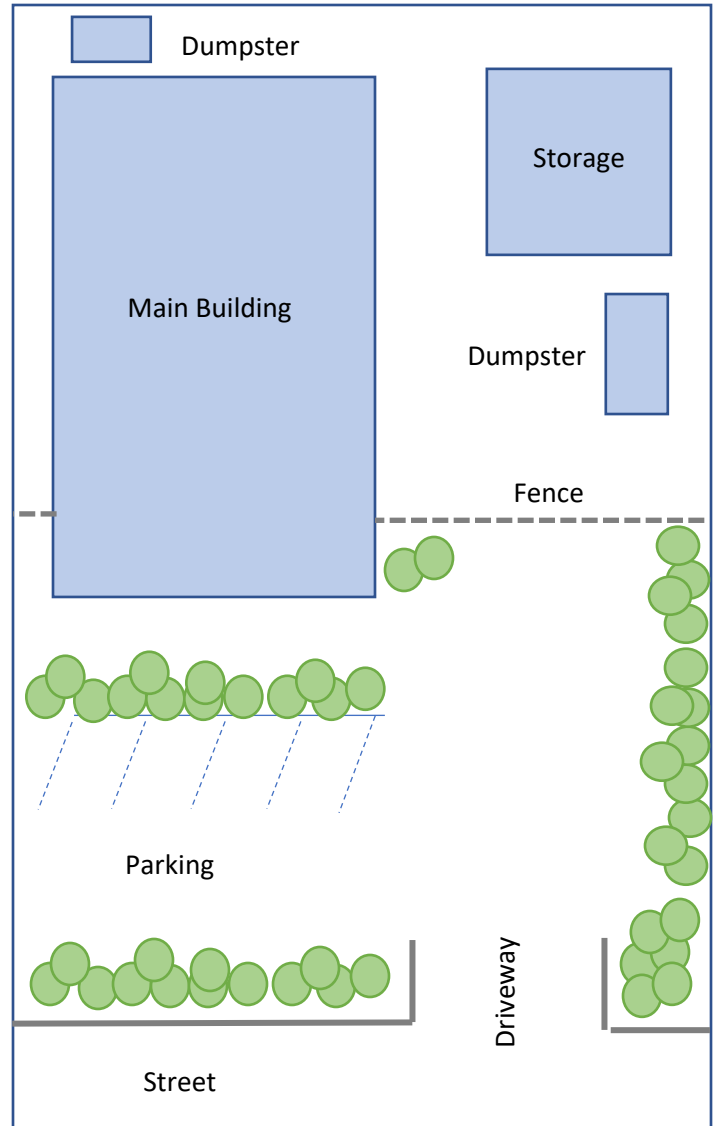
Position \_\_\_\_\_

Date \_\_\_\_\_

# Diagrams



Example Floor Plan



Example Site Plan

## Floor Plans:

Please show the basic Home/Office layout, including entrances, exits, restrooms, office equipment, etc. Please show the location of fire extinguishers and storage areas.

**Please attach the required sketches with your Business License Application**

## Site Plan:

Site plans are not required for businesses located within a multi-tenant business park or multi-tenant office building unless outside storage is proposed. Include the main building, storage structures, other buildings on the premises, located driveways, parking spaces, landscapes, fences, dumpster, etc.



# South Coast Air Quality Management District

21865 Copley Drive, Diamond Bar, CA 91765-4182  
(909) 396-3529 • [http:// www.aqmd.gov](http://www.aqmd.gov)

## Air Quality Permit Checklist

California Government Code Section 65850.2 prohibits cities from issuing an occupancy permit to a business without clearance from the local air quality agency. This Checklist will determine if you need to obtain clearance from the South Coast Air Quality Management District (AQMD).

Company Name: \_\_\_\_\_

Property Address: \_\_\_\_\_

City: \_\_\_\_\_ Zip Code: \_\_\_\_\_

Contact Person: \_\_\_\_\_ Title: \_\_\_\_\_

Type of Business: \_\_\_\_\_ Telephone: \_\_\_\_\_

Fax Number: \_\_\_\_\_ e-mail address: \_\_\_\_\_

Applicant (print name): \_\_\_\_\_ Signature: \_\_\_\_\_

Date: \_\_\_\_\_

- Will the facility have any of the following equipment? Yes  No

Charbroiler

Dry cleaning machine

Spray booth

Printing press (screen/lithographic/flexographic)

Internal combustion engine greater than 50 HP (excluding motor vehicles)

Boiler/combustion equipment (greater than 1 million BTU/hr. maximum input)

Abrasive blasting cabinet/room

Baghouse/cartridge-type dust filter/scrubber

Motor fuel storage and dispensing equipment

- Will any of the following operations be performed? Yes  No

Application of paints or adhesives

Etching, plating, casting, or melting of metals

Molding, extruding, or curing of plastics

Mixing and blending of liquids and/or powders

Storage of acids, solvents, organic liquids, or fuels

Production of fumes, dust, smoke, or strong odors

**If you answered “No” to both questions, this checklist is your clearance from AQMD.** If you answered “Yes” to either question, you must contact AQMD to determine if air quality permits are required. If permits are needed, AQMD will assist you in submitting permit application(s) and then provide you with a clearance letter. You can call AQMD at their Small Business Assistance Office at **1-800-CUT-SMOG (1-800-288-7664)**.

## ATTACHMENT A

### FACILITIES COVERED BY NATIONAL POLLUTANT DISCHARGE ELIMINATION SYSTEM (NPDES) GENERAL PERMIT FOR STORM WATER DISCHARGES ASSOCIATED WITH INDUSTRIAL ACTIVITIES (GENERAL PERMIT)

1. Facilities Subject To Storm Water Effluent Limitations Guidelines, New Source Performance Standards, or Toxic Pollutant Effluent Standards Found in 40 Code of Federal Regulations, Chapter I, Subchapter N (Subchapter N):  
  
Cement Manufacturing (40 C.F.R. Part 411); Feedlots (40 C.F.R. Part 412); Fertilizer Manufacturing (40 C.F.R. Part 418); Petroleum Refining (40 C.F.R. Part 419), Phosphate Manufacturing (40 C.F.R. Part 422), Steam Electric (40 C.F.R. Part 423), Coal Mining (40 C.F.R. Part 434), Mineral Mining and Processing (40 C.F.R. Part 436), Ore Mining and Dressing (40 C.F.R. Part 440), Asphalt Emulsion (40 C.F.R. Part 443), Landfills (40 C.F.R. Part 445), and Airport Deicing (40 C.F.R. Part 449).
2. Manufacturing Facilities:  
  
Facilities with Standard Industrial Classifications (SICs) 20XX through 39XX, 4221 through 4225. (This category combines categories 2 and 10 of the previous general permit.)
3. Oil and Gas/Mining Facilities:  
  
Facilities classified as SICs 10XX through 14XX, including active or inactive mining operations (except for areas of coal mining operations no longer meeting the definition of a reclamation area under 40 Code of Federal Regulations. 434.11(1) because the performance bond issued to the facility by the appropriate Surface Mining Control and Reclamation Acts authority has been released, or except for areas of non-coal mining operations which have been released from applicable State or Federal reclamation requirements after December 17, 1990) and oil and gas exploration, production, processing, or treatment operations, or transmission facilities that discharge storm water contaminated by contact with or that has come into contact with any overburden, raw material, intermediate products, finished products, by-products, or waste products located on the site of such operations. Inactive mining operations are mining sites that are not being actively mined, but which have an identifiable owner/operator. Inactive mining sites do not include sites where mining claims are being maintained prior to disturbances associated with the extraction, beneficiation, or processing of mined material; or sites where minimal activities are undertaken for the sole purpose of maintaining a mining claim.
4. Hazardous Waste Treatment, Storage, or Disposal Facilities:  
  
Hazardous waste treatment, storage, or disposal facilities, including any facility operating under interim status or a general permit under Subtitle C of the Federal Resource, Conservation, and Recovery Act.
5. Landfills, Land Application Sites, and Open Dumps:  
  
Landfills, land application sites, and open dumps that receive or have received industrial waste from any facility within any other category of this Attachment; including facilities subject to regulation under Subtitle D of the Federal Resource, Conservation, and Recovery Act, and facilities that have accepted wastes from construction activities (construction activities include any clearing, grading, or excavation that results in disturbance).
6. Recycling Facilities:  
  
Facilities involved in the recycling of materials, including metal scrapyards, battery reclaimers, salvage yards, and automobile junkyards, including but limited to those classified as Standard Industrial Classification 5015 and 5093.
7. Steam Electric Power Generating Facilities:  
  
Any facility that generates steam for electric power through the combustion of coal, oil, wood, etc.
8. Transportation Facilities:  
  
Facilities with SICs 40XX through 45XX (except 4221-25) and 5171 with vehicle maintenance shops, equipment cleaning operations, or airport deicing operations. Only those portions of the facility involved in vehicle maintenance (including vehicle rehabilitation, mechanical repairs, painting, fueling, and lubrication) or other operations identified under this Permit as associated with industrial activity.
9. Sewage or Wastewater Treatment Works:  
  
Facilities used in the storage, treatment, recycling, and reclamation of municipal or domestic sewage, including land dedicated to the disposal of sewage sludge, that are located within the confines of the facility, with a design flow of one million gallons per day or more, or required to have an approved pretreatment program under 40 Code of Federal Regulations part 403. Not included are farm lands, domestic gardens, or lands used for sludge management where sludge is beneficially reused and are not physically located in the confines of the facility, or areas that are in compliance with Section 405 of the Clean Water Act.

## STATE BILL No. 205 BUSINESS LICENSES: STORMWATER DISCHARGE COMPLIANCE

Facilities, which industrial activities are described by one of the following criteria, are required to obtain coverage under the National Pollutant Discharge Elimination System (NPDES), General Permit for Storm Water Discharges Associated with Industrial Activities, Order No. CAS000001. For more information about business applicability, call the City of Calimesa's Public Works Department at 909-795-9801 ext. 235. More information on how to apply and complete NPDES Permit application is available at [https://www.waterboards.ca.gov/water\\_issues/programs/stormwater/industrial.html](https://www.waterboards.ca.gov/water_issues/programs/stormwater/industrial.html)

- 1. Facilities Subject To Storm Water Effluent Limitations Guidelines, New Source Performance Standards, or Toxic Pollutant Effluent Standards Found in 40 Code of Federal Regulations, Chapter I, Subchapter N: Cement Manufacturing (40 C.F.R. Part 411); Feedlots (40 C.F.R. Part 412); Fertilizer Manufacturing (40 C.F.R. Part 418); Petroleum Refining (40 C.F.R. Part 419), Phosphate Manufacturing (40 C.F.R. Part 422), Steam Electric (40 C.F.R. Part 423), Coal Mining (40 C.F.R. Part 434), Mineral Mining and Processing (40 C.F.R. Part 436), Ore Mining and Dressing (40 C.F.R. Part 440), Asphalt Emulsion (40 C.F.R. Part 443), Landfills (40 C.F.R. Part 445), and Airport Deicing (40 C.F.R. Part 449).
- 2. Manufacturing Facilities: Facilities with Standard Industrial Classifications (SICs) 20XX through 39XX, 4221 through 4225.
- 3. Oil and Gas/Mining Facilities: Facilities classified as SICs 10XX through 14XX, including active or inactive mining operations (some exceptions apply; for more info visit [https://www.waterboards.ca.gov/water\\_issues/programs/stormwater/industrial.html](https://www.waterboards.ca.gov/water_issues/programs/stormwater/industrial.html))
- 4. Hazardous Waste Treatment, Storage, or Disposal Facilities: Hazardous waste treatment, storage, or disposal facilities, including any facility operating under interim status or a general permit under Subtitle C of the Federal Resource, Conservation, and Recovery Act.
- 5. Landfills, Land Application Sites, and Open Dumps: Landfills, land application sites, and open dumps that receive or have received industrial waste from any facility within any other category of this Attachment; including facilities subject to regulation under Subtitle D of the Federal Resource, Conservation, and Recovery Act, and facilities that have accepted wastes from construction activities (construction activities include any clearing, grading, or excavation that results in disturbance).
- 6. Recycling Facilities: Facilities involved in the recycling of materials, including metal scrapyards, battery reclaimers, salvage yards, and automobile junkyards, including but limited to those classified as Standard Industrial Classification 5015 and 5093.
- 7. Steam Electric Power Generating Facilities: Any facility that generates steam for electric power through the combustion of coal, oil, wood, etc.
- 8. Transportation Facilities: Facilities with SICs 40XX through 45XX (except 4221-25) and 5171 with vehicle maintenance shops, equipment cleaning operations, or airport deicing operations. Only those portions of the facility involved in vehicle maintenance (including vehicle rehabilitation, mechanical repairs, painting, fueling, and lubrication) or other operations identified under this Permit as associated with industrial activity.
- 9. Sewage or Wastewater Treatment Works: Facilities used in the storage, treatment, recycling, and reclamation of municipal or domestic sewage, including land dedicated to the disposal of sewage sludge, that are located within the confines of the facility, with a design flow of one million gallons per day or more, or required to have an approved pretreatment program under 40 Code of Federal Regulations part 403. Not included are farmlands, domestic gardens, or lands used for sludge management where sludge is beneficially reused and are not physically located in the confines of the facility, or areas that are in compliance with Section 405 of the Clean Water Act.
- None of the above; my business is not subject to coverage under the NPDES Permit.

*As a business owner, I certify that the provided business information is correct and accurate.*

Business Name: \_\_\_\_\_

Business Address: \_\_\_\_\_

Business Assessor's Parcel Number: \_\_\_\_\_ Business Primary SIC Code \_\_\_\_\_

Waste Discharge Identification (WDID) Number: \_\_\_\_\_ (if a business type listed between 1 and 9 applies)

Business Owner Name: \_\_\_\_\_ Phone: \_\_\_\_\_

Business Owner Signature: \_\_\_\_\_ Date: \_\_\_\_\_

## Common SIC codes

The tables below list common SICs. **They do not list all SICs.** Go to OSHA's website for the complete list of 4 digit SICs: [www.osha.gov/pls/imis/sic\\_manual.html](http://www.osha.gov/pls/imis/sic_manual.html)

Common NON-INDUSTRIAL SIC codes			
<b>Retail trade</b>	<b>5211 to 5999</b>	<b>Services</b>	<b>7011 to 8999</b>
Lumber and other building materials dealers	5211	Power laundries	7211
Paint, glass, and wallpaper stores	5231	Coin-operated laundries and drycleaning	7215
Hardware stores	5251	Dry cleaners	7216
Retail nurseries, lawn and garden supply stores	5261	Beauty shops	7231
Variety stores (general merchandise)	5331	Barber shops	7241
Grocery stores	5411	Tax return preparation services	7291
Retail bakeries	5461	Miscellaneous services (massage, tanning, tattoo)	7299
Motor vehicle dealers (new and used)	5511	Photocopying and duplicating services	7334
Motor vehicle dealers (used only)	5521	Commercial photography	7335
Auto and home supply stores	5531	Pest control services	7342
Gasoline service stations	5541	Building cleaning and maintenance services	7349
Apparel (clothes, shoes, hats) stores	5561 to 5699	Heavy construction equipment rental and leasing	7353
Furniture stores	5712	Equipment rental and leasing	7359
Household appliance stores	5722	Truck rental and leasing, without drivers	7513
Eating places (restaurants)	5812	Car rental	7514
		Automotive body and paint shops	7532
		General automotive repair shops	7538
		Car washes	7542
		Welding repair	7692
		Health services	8011 to 8099
		Legal services	8111
		Child day care services	8351
		Accounting, auditing, and bookkeeping services	8721
<b>Wholesale trade (non-industrial)</b>			
Wholesale trade of motor vehicles, supplies, and new parts	5012 to 5014		
Wholesale trade of furniture	5021, 5023		
Wholesale trade of lumber and other construction materials	5031 to 5039		
Wholesale trade of professional and electrical equipment	5043 to 5065		
Wholesale trade of hardware, plumbing, and heating equipment	5072 to 5078		
Wholesale trade of machinery, equipment, and supplies	5082 to 5088		
Wholesale trade of apparel	5131 to 5139		
Wholesale trade of groceries	5141 to 5149		
<b>Construction: Building and trade contractors</b>	<b>1521 to 1799</b>		
Building construction contractors	1521 to 1542		
Special trade building contractors (plumbing, HVAC, etc.)	1711 to 1799		
		<b>Finance, insurance, and real estate</b>	<b>6011 to 6799</b>
		Insurance agents, brokers, and service	6411
		Real estate: Operators of nonresidential buildings	6512
		Real estate: Operators of apartment buildings	6513
		Real estate: Agents and managers	6531

Common INDUSTRIAL SIC codes			
<b>Manufacturing</b>	<b>2011 to 3999</b>	<b>Manufacturing (continued)</b>	<b>2011 to 3999</b>
Food and beverage manufacturing or processing	2011 to 2099	Transportation equipment manufacturing	3711 to 3799
Apparel (clothing) production and fabrication	2311 to 2399	Measuring, analyzing, and controlling instruments manufacturing	3812 to 3873
Lumber and wood products manufacturing	2411 to 2499	Miscellaneous manufacturing, not elsewhere classified	3999
Furniture manufacturing	2511 to 2599		
Paper and allied products manufacturing	2611 to 2679		
Printing, publishing, and allied industries	2711 to 2796		
Commercial printing, lithographic	2752		
Chemicals and allied products	2812 to 2899		
Petroleum refining	2911 to 2999		
Rubber and plastic product manufacturing	3011 to 3089		
Plastic molding	3089		
Stone, clay, glass, and concrete manufacturing	3211 to 3299		
Basic metal product manufacturing	3312 to 3399		
Fabricated metal products, except machinery and transport	3411 to 3499		
Fabricated structural metal manufacturing	3441		
Sheet metal work	3444		
Machinery and equipment manufacturing	3511 to 3599		
Machine shops	3599		
Electronic and electrical equipment manufacturing	3612 to 3699		
		<b>Transportation (industrial), electric, and sanitary</b>	<b>4011 to 4581, 4911/52/53</b>
		Railway transportation	4011, 4013
		Local and suburban transit	4111 to 4173
		Motor freight transportation and warehousing	4212 to 4231
		General warehousing and storage	4225
		Water transportation	4412 to 4499
		Air transportation	4512 to 4581
		Electric services	4911
		Sewerage systems	4952
		Refuse systems (refuse collection and disposal)	4953
		<b>Wholesale trade (industrial)</b>	
		Wholesale trade of used motor vehicle parts	5015
		Wholesale trade of scrap and waste materials	5093
		Wholesale trade of petroleum: bulk stations and terminals	5171

# Resources for New Businesses

## City of Calimesa

908 Park Ave.  
Calimesa, CA 92320

Monday-Thursday  
7:00am-5:30pm  
(909) 795-9801  
[www.cityofcalimesa.net](http://www.cityofcalimesa.net)

## Chamber of Commerce

1007 Calimesa Blvd. Suite D  
Calimesa, CA 92320

(909) 795-7612  
<http://calimesachamber.com/>

## Health Permit

County of Riverside  
Environmental Health  
Services  
800 S Sanderson #200  
Hemet, CA 92545  
(951) 766-2824

## Sales & Use Permit

State of California  
Board of Equalization

37337 Main Street, Suite 1000  
Riverside, CA 92501  
(951) 680-6400  
[www.boe.ca.gov](http://www.boe.ca.gov)

## State Employer ID #

State of CA Employment  
Development Dept.

(888) 745-3886  
[www.edd.ca.gov](http://www.edd.ca.gov)

## Federal Employer ID #(EIN of SSN)

U.S. Department of  
Treasury Internal Revenue  
Service Fresno, CA 93888

(800) 829-1040  
[www.irs.gov](http://www.irs.gov)

## Fictitious Name

News Mirror  
35154 Yucaipa Blvd.  
Yucaipa, CA 92399  
909-797-9101  
[adforce@centurygroup.com](mailto:adforce@centurygroup.com)

Riverside County Clerk  
2720 Gateway Drive  
Riverside, CA 92507  
(951) 486-7000

## Contractor's License

State of California  
Contractor's State License Board

9821 Business Park DR.  
Sacramento, CA 62504

(800) 321-cslb  
[www.cslb.ca.gov](http://www.cslb.ca.gov)

## Alcoholic Beverages

State of California  
Alcoholic Beverage  
Control  
34-160 Gateway Drive  
Suite 120 Palm Desert,  
CA 92211

(760) 324-2027  
[www.abc.ca.gov](http://www.abc.ca.gov)

## Information /Help Sources

U.S Small Business  
Administration  
Inland Empire Small Business  
Development Center  
1157 Spruce Street  
Riverside, CA 92507

(951) 781-2345  
[www.iesbdc.org](http://www.iesbdc.org)